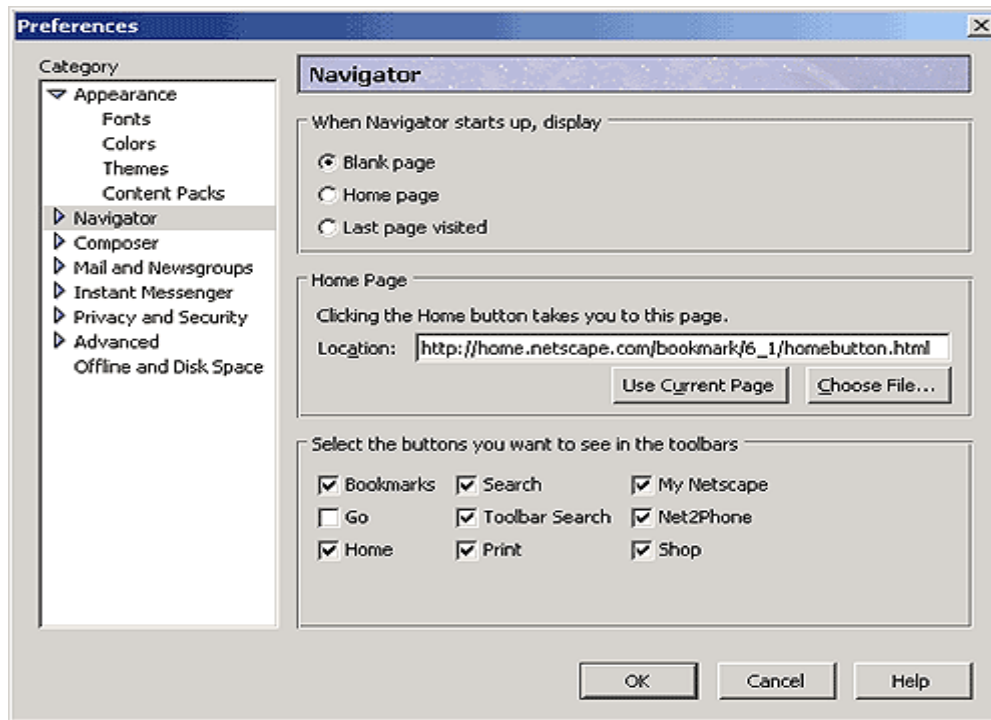


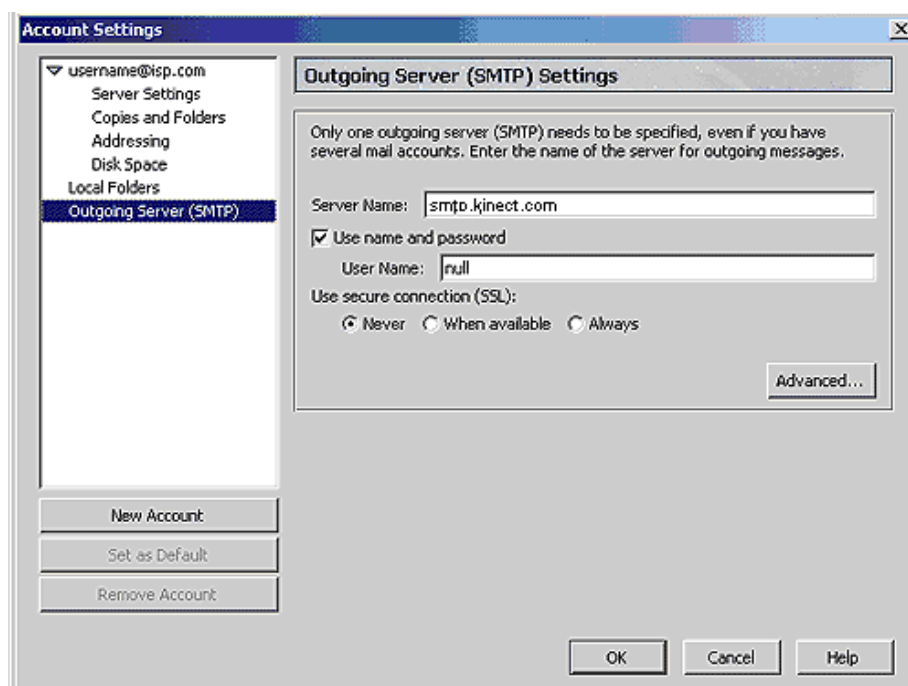
# How to set up your e-mail

## Netscape Communicator

Click on the *Edit* menu and select *Preferences* to bring up the Preferences window.



In the left-hand *Category* pane of the Preferences window, look for the *Mail & Newsgroups* item. If a plus sign (+) is visible to the left of the *Mail & Newsgroups* item, click on that plus sign to expand the menu. With the menu expanded, click the *Mail Servers* menu item to bring up the *Mail Servers* preferences in the right-hand pane.



In the *Mail Servers* pane, locate the text field labelled *Outgoing mail (SMTP) server*. You should copy the current text in that field and paste it into a text file or otherwise make note of it, so you can later restore your SMTP settings to use your own Internet Service Provider.

After saving your original settings, change the text in the *Outgoing mail (SMTP) server:* field to **smtp.kinect.co.nz** and click **OK** to save the settings. You will now be able to send email via the CaféNET mail server while still receiving email from your own Internet Service Provider or company mail server.

To Restore Your Settings when you no longer need to use the Kinect network, open the text file into which you pasted your old settings (or locate where you made a note of your old settings) and enter the SMTP Server information from there. In Netscape Communicator, from the *Edit* menu, select *Preferences* to bring up the Preferences window. In the left-hand *Category* pane of the Preferences window, look for the *Mail & Newsgroups* item. If a plus sign (+) is visible to the left of the *Mail & Newsgroups* item, click on that plus sign to expand the menu. With the menu expanded, click the *Mail Servers* menu item to bring up the *Mail Servers* preferences in the right-hand pane. In the text field labelled *Outgoing mail (SMTP) server:*, delete **smtp.kinect.co.nz** and paste the SMTP Server information that you copied from your text file. Click **OK** and your settings will be changed back to using your own Internet Service Provider's server.

If you did not save your original settings, you will need to contact your Internet Service Provider or System Administrator to receive instructions on how to restore your SMTP data to use your Internet Service Provider or company's mail server. Kinect has no information on your original settings and cannot assist you in restoring them.